

THE SYCAMORE

3 BEDROOM HOME



Enjoy life at Stowford Mill in our three bedroom townhouses, nestled in the Erme Valley. The Sycamore looks stunning with wood panelling or stonework, which blend beautifully into Stowford's idyllic parkland.

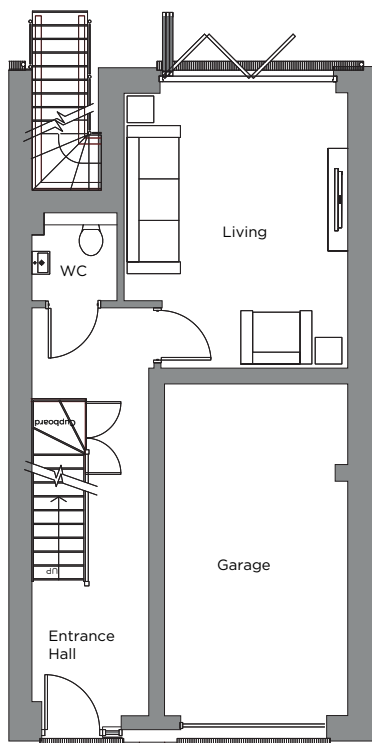
Each of our three bedroom townhouses comes with a parking space and garage with a remotely operated door. A spacious lounge with bi-folding doors leading the sunny south facing garden, with fibre cabling and hard wired internet points this creates the perfect space to relax and unwind. A separate WC and generous under stairs storage completes the ground floor.

Stairs to the first floor lead into the open plan, free-flowing living area with a light and airy kitchen diner, ideal for entertaining friends or spending time with the family. The Sycamore has the added benefit of a further set of bi-folding doors which open onto the terrace, complete with glass balustrade that overlooks and leads to the rear garden. On this floor, there is also a study room.

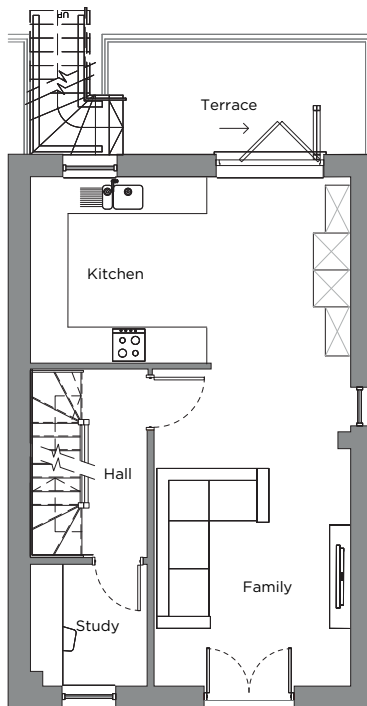
On the second floor, there is the master bedroom with en-suite, further double bedroom and single bedroom that share the family bathroom. With fitted wardrobes to the master bedroom, and quality bathroom furniture and fittings throughout, buying a home at Stowford Mill will be the perfect move.

THE SYCAMORE

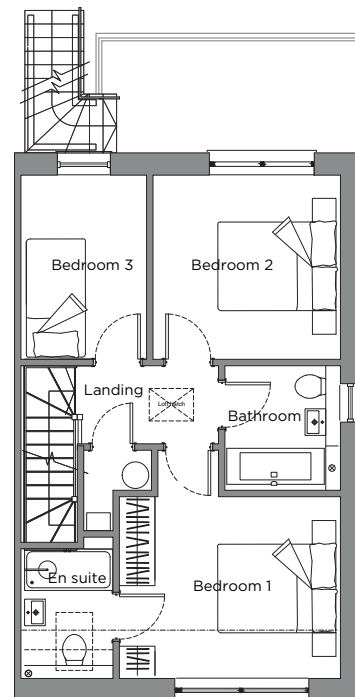
3 BEDROOM HOME



GROUND FLOOR
(52 sq/m - 560 sq/ft)



FIRST FLOOR
(41 sq/m - 441 sq/ft)



SECOND FLOOR
(42 sq/m - 452 sq/ft)

TOTAL INTERNAL AREA 135 sq/m - 1453 sq/ft

GROUND FLOOR

Living room 3.80 x 4.60m

FIRST FLOOR

Family room 3.30 x 4.20m
Study 2.0 x 2.10m
Dining room 3.30 x 4.30m
Kitchen 2.10 x 3.00m

SECOND FLOOR

Bedroom 1 3.80 x 3.70m
Bedroom 2 3.20 x 3.40m
Bedroom 3 2.10 x 3.10m

