

THE OAK

5 BEDROOM HOME



Enjoy life at Stowford Mill, nestled within the Erme valley, living in one of our five bedroom incredibly spacious homes, that creates a haven from the stresses of modern life.

Designed around the dynamics of modern family living, these houses are the epitome of Stowford's collection of homes, with beautiful bespoke exteriors that embody the heritage of their surroundings, whilst the interiors exude contemporary style.

An expansive kitchen / dining area is perfect for spending time together with the family, with bi-folding doors leading out to the rear garden, while a separate lounge provides an idyllic place to unwind. Leading off the kitchen a utility and WC can be found.

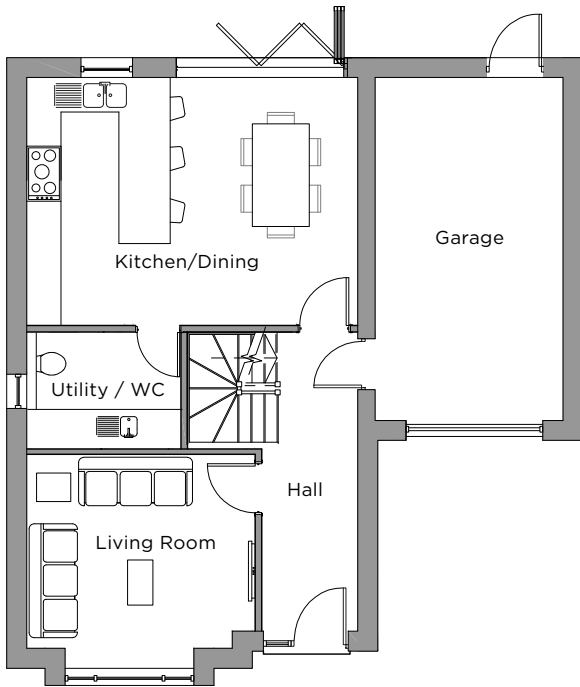
On the first floor there are four double bedrooms and a family bathroom. The two larger bedrooms each have an en suite with shower, for increased convenience and luxury. There are a further two bedrooms. The largest bedroom has the added benefit of dual wardrobes, creating a private dressing room. On the second floor, there is a fifth bedroom with en suite, as well as storage spaces.

All of the modern conveniences, appliances and quality fittings and finishes are included as standard, ensuring you can effortlessly enjoy life in this stunning new Stowford home.

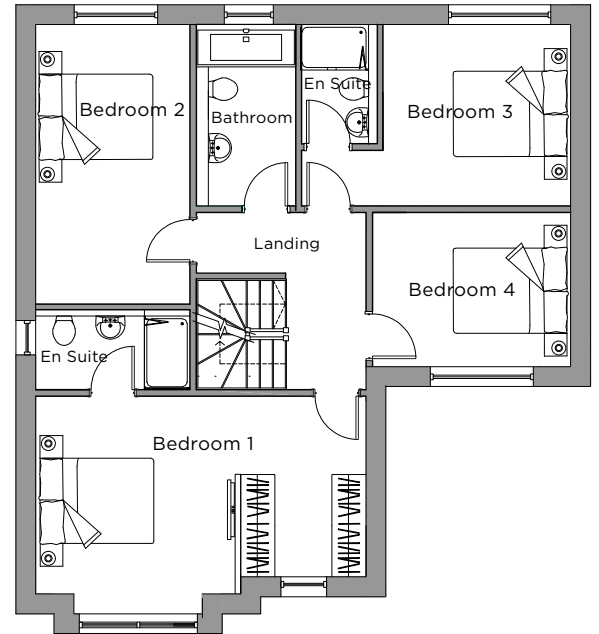
The Oak has an integrated garage accessible from the ground floor with remotely operated garage door.

THE OAK

5 BEDROOM HOME



GROUND FLOOR
(80 sq/m - 861 sq/ft)



FIRST FLOOR
(80 sq/m - 861 sq/ft)

TOTAL INTERNAL AREA 201 sq/m - 2163 sq/ft

GROUND FLOOR

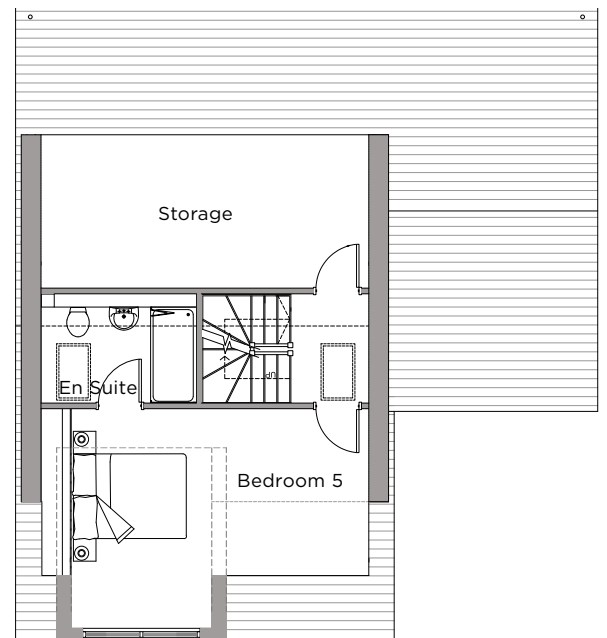
Kitchen/Dining 5800 x 4400 mm
Living Room 4000 x 3800 mm

FIRST FLOOR

Bedroom 1 5800 x 3800 mm
Bedroom 2 2700 x 4800 mm
Bedroom 3 3300 x 3200 mm
Bedroom 4 3500 x 2700 mm

SECOND FLOOR

Bedroom 5 5300 x 3900 mm
Storage 5800 x 2600 mm



SECOND FLOOR
(41 sq/m - 441 sq/ft)



Computer generated images are not to scale. Finishes, materials, and elevation treatments may vary from those shown and landscaping is illustrative only. All dimensions indicated are approximate and furniture layout is for illustrative purposes only. Homes may be a 'handed' (mirror image) version of the illustrations. See individual plot details for more information.