

THE BIRCH

4 BEDROOM HOME



Enjoy life at Stowford Mill, nestled within the Erme valley, living in one of our four bedroom homes. With feature panels of wood and stonework ensuring these homes blend beautifully into Stowford's parkland, facing directly towards its huge central oak tree believed to be as old as the Mill itself.

A fine example of a large home of quality and character, built with care to offer a solid foundation for future family life. These homes capture the essence of traditional house building, with a bay window to one side of the front entrance and integrated garage to the other. Once you have stepped through the commanding entrance, you are greeted with the contemporary stylish interior finishes.

This home provides families beautiful space in which to enjoy their time together with an open plan kitchen / dining area with bi-folding doors to the rear garden, that lends itself perfectly to being the heart of the home, with an adjoining utility room for convenience. While an elegant lounge with bay window to the front provides you with somewhere perfect for relaxing.

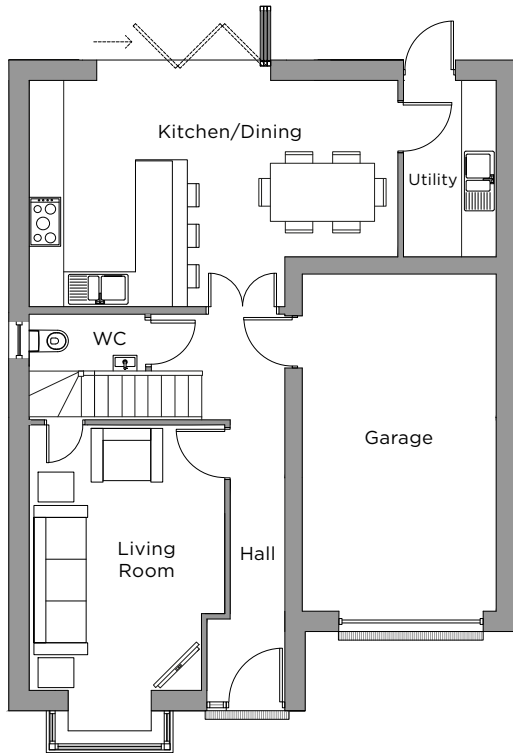
On the first floor there are four bedrooms and a family bathroom. The two larger bedrooms each having an en suite with shower. A storage cupboard is also included within the hallway on this level.

All of the modern conveniences, appliances and quality fittings and finishes that you could wish for are standard, ensuring you can effortlessly enjoy your time in this substantial new Stowford home.

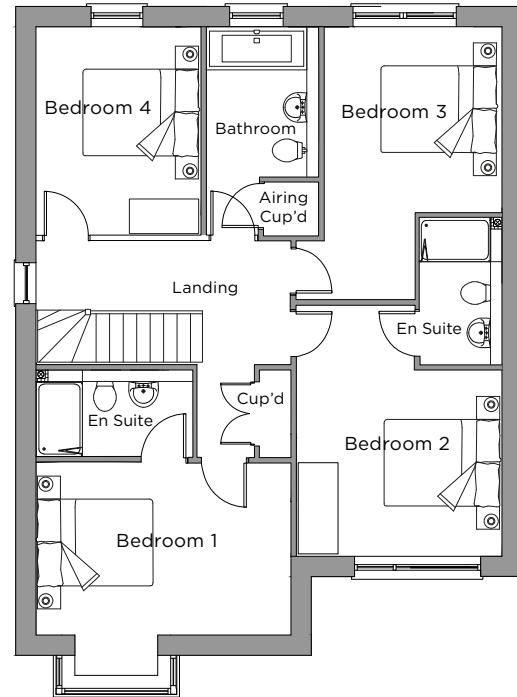
This home has an integrated garage accessible from the ground floor with remotely operated garage door.

THE BIRCH

4 BEDROOM HOME



GROUND FLOOR
(79 sq/m - 850 sq/ft)



FIRST FLOOR
(79 sq/m - 850 sq/ft)

TOTAL INTERNAL AREA 158 sq/m - 1701 sq/ft

GROUND FLOOR

Kitchen/Dining 6400 x 3900 mm
Living Room 3300 x 4600 mm

FIRST FLOOR

Bedroom 1 4400 x 3000 mm
Bedroom 2 3600 x 3200 mm
Bedroom 3 3100 x 3200 mm
Bedroom 4 2800 x 3600 mm

