

# B environmental

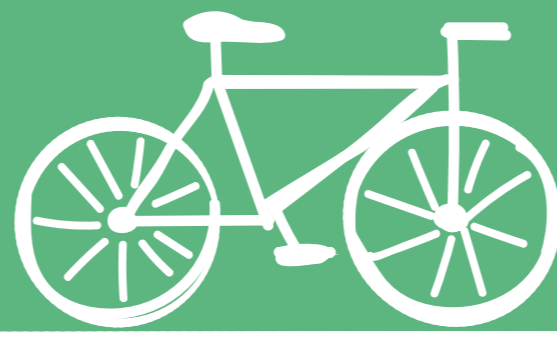
## Our Charter

Our charter targets 5 key areas where improvement and commitment can and will be made. This includes our people & office environments, our developments, our new homes, our supply chain & our communities.

All of our site & sales offices are connected to a 100% green energy provider.



We encourage all of our staff to travel green with the cycle to work scheme.



Our planting programs focus on pollinating flowers & shrubs.

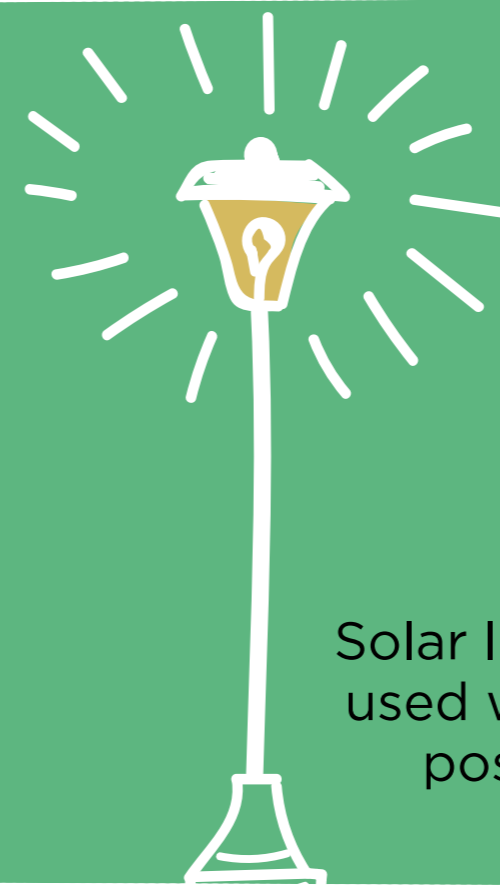


We use local suppliers / depots to reduce travel.



All of our new homes to have 100% green energy supply.

BeeBricks to be incorporated in every development.



Solar lighting is used wherever possible.

And SO much more!

### Our New Homes

No single use plastic in our homeowner welcome packs. *Homeowner pack includes 1 hessian Burrington Estates bag (carrier bag replacement). Homeowner pack includes 2 Burrington Estates eco cups (replace single use cups).*

Low energy downlighters (over and above current requirement).

PV offered as upgrade on all new homes (where possible).

PV battery storage offered as upgrade on all new homes (where possible).

Electric car charging points offered as upgrade on all new homes (where possible).

Water butts offered as upgrade on all new homes (where possible).

### Our Supply Chain

Lobby for reduced plastic packaging from our supply chain.

Replace plastic protection with cardboard (& recycle).

Replace plastic office signage with cardboard (& recycle).

Sustainable timber to be used throughout.

Focus on site waste management - reduce, reuse & recycle.

Trade specifications to require environmental consideration.

### Our People & Office Environments

No plastic cups in our offices.

All staff provided with eco-reusable cups.

Cycle racks at head office.

Reduce office paper usage - *Document management & scanning.*

### Our Developments

Increase use of hedges and fencing versus brick / rendered walls.

Cycle storage to be considered in every development.

Seek to achieve a nett biodiversity gain on all developments.

### Our Communities

Support or instigate at least one environmental activity per development.